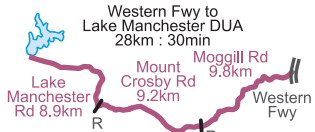
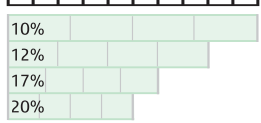


# Trail Running Association of Queensland Lake Manchester Trails

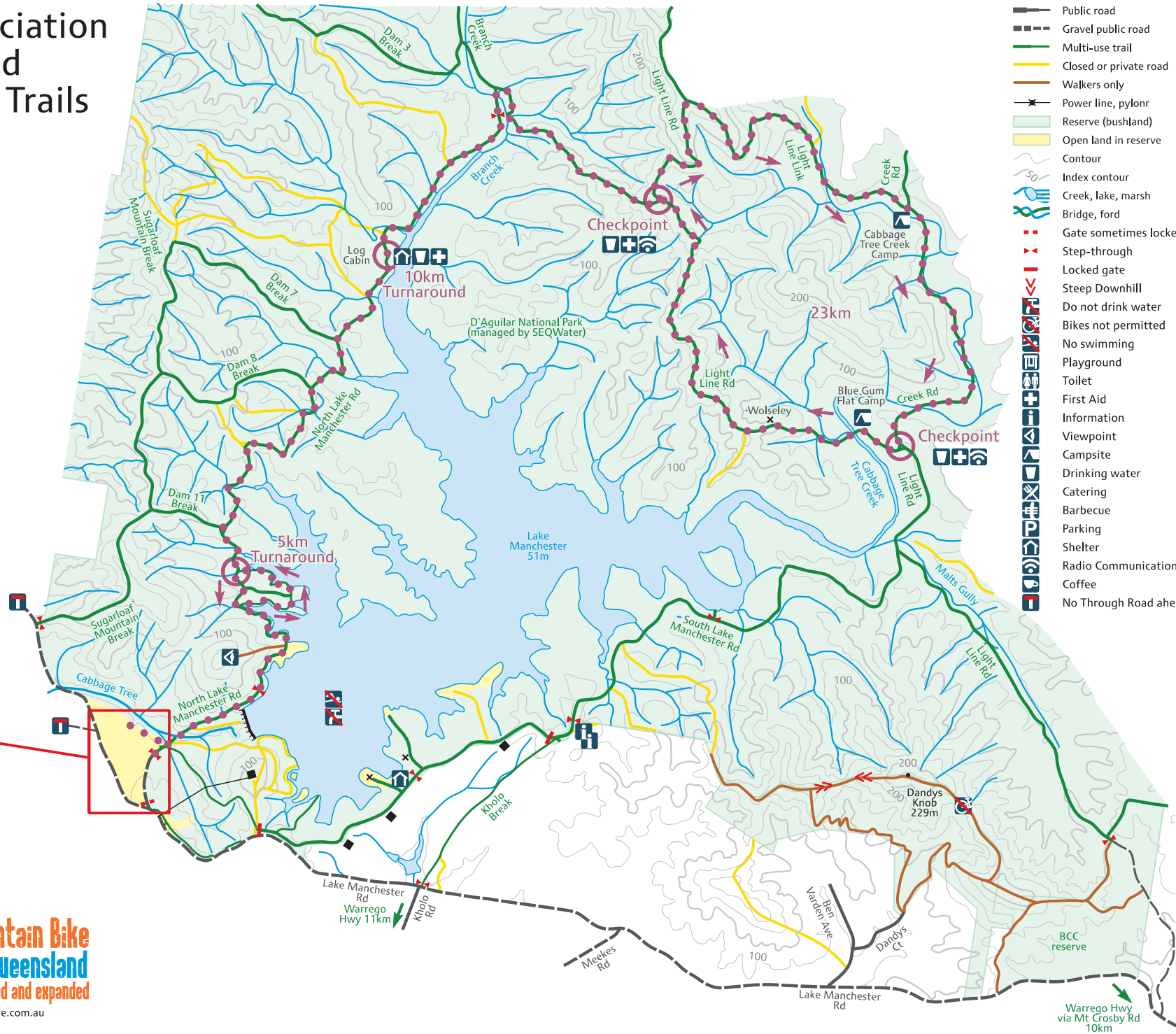
Scale 1:30,000 (1cm = 300m)  
Contours 25m / 100m

500m 1km



Lake Manchester Reserve  
Day Use Area  
Lake Manchester Rd  
Kholo 4306  
Brisbane City  
Brisway 53 M5  
UBD 172 Q1

Event Centre  
Lake Manchester Day Use Area



- Public road
- Gravel public road
- Multi-use trail
- Closed or private road
- Walkers only
- Power line, pylon
- Reserve (bushland)
- Open land in reserve
- Contour
- Index contour
- Creek, lake, marsh
- Bridge, ford
- Gate sometimes locked
- Step-through
- Locked gate
- Steep Downhill
- Do not drink water
- Bikes not permitted
- No swimming
- Playground
- Toilet
- First Aid
- Information
- Viewpoint
- Campsite
- Drinking water
- Catering
- Barbecue
- Parking
- Shelter
- Radio Communications
- Coffee
- No Through Road ahead

map created by  
Mark Roberts  
www.markroberts.id.au  
mark@markroberts.id.au  
0404 50 99 24

**Where to Mountain Bike  
in South East Queensland**  
FIFTH EDITION fully revised and expanded  
www.organisedgrime.com.au